

ARQUETAS TIPO D.II

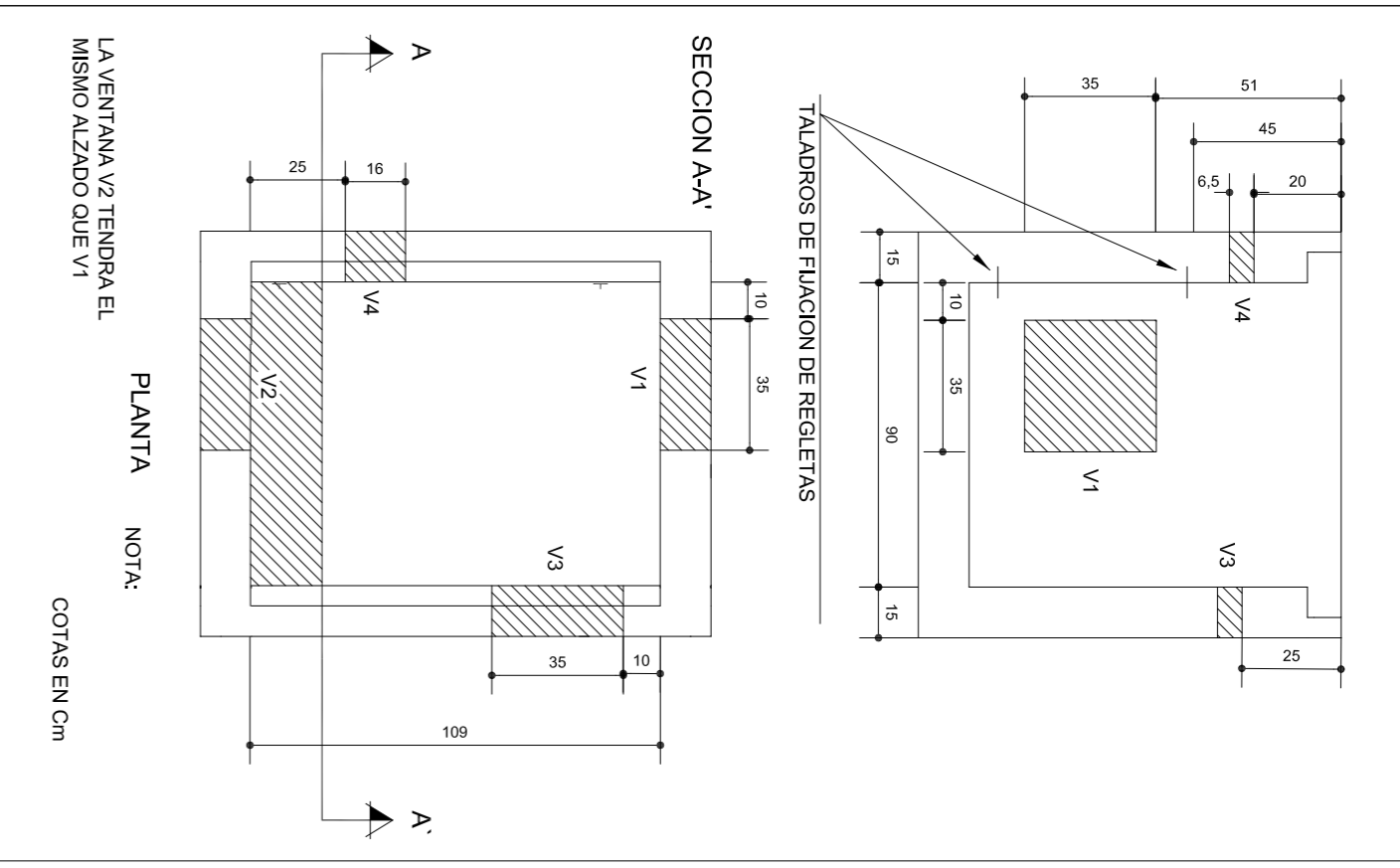
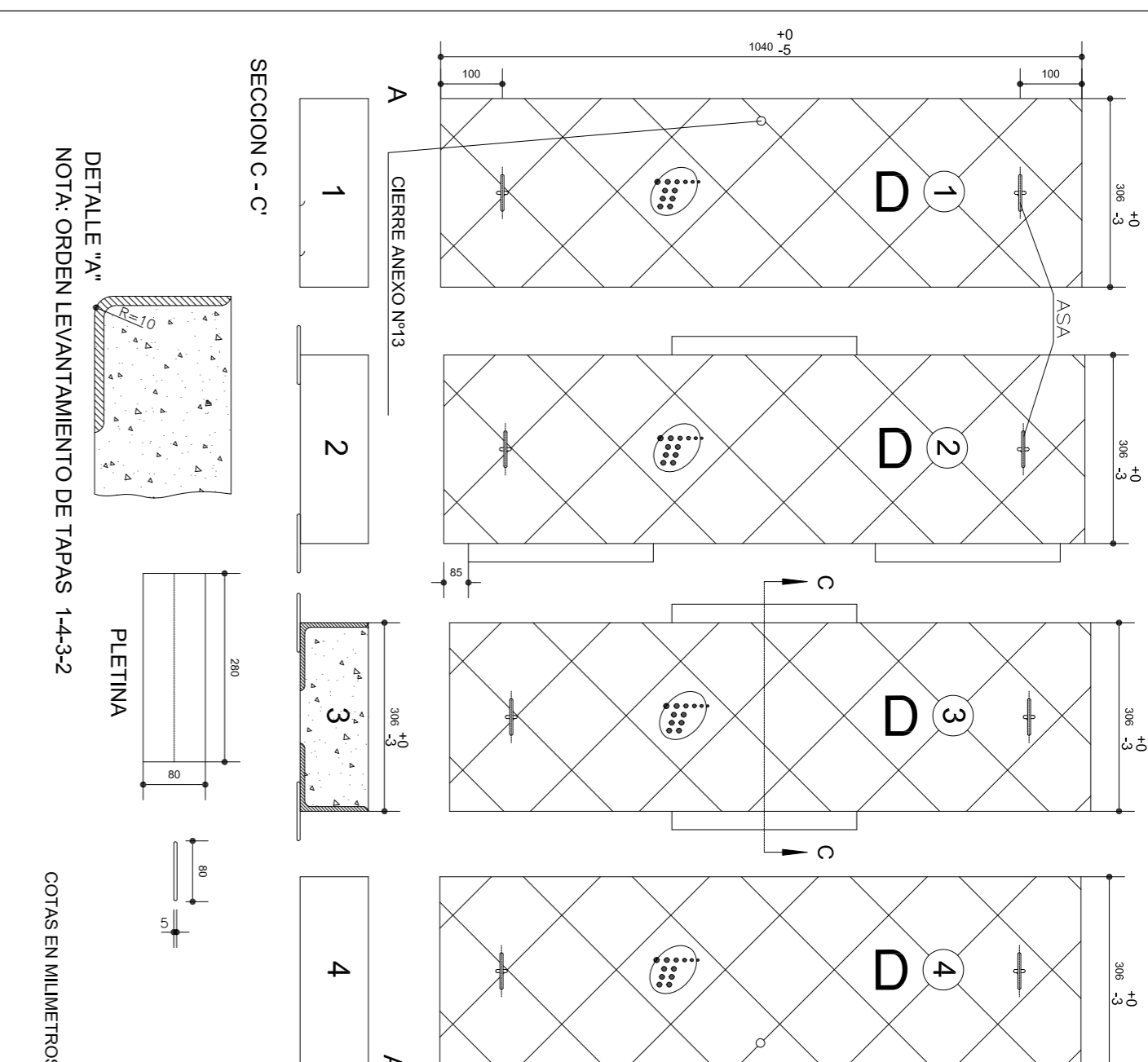
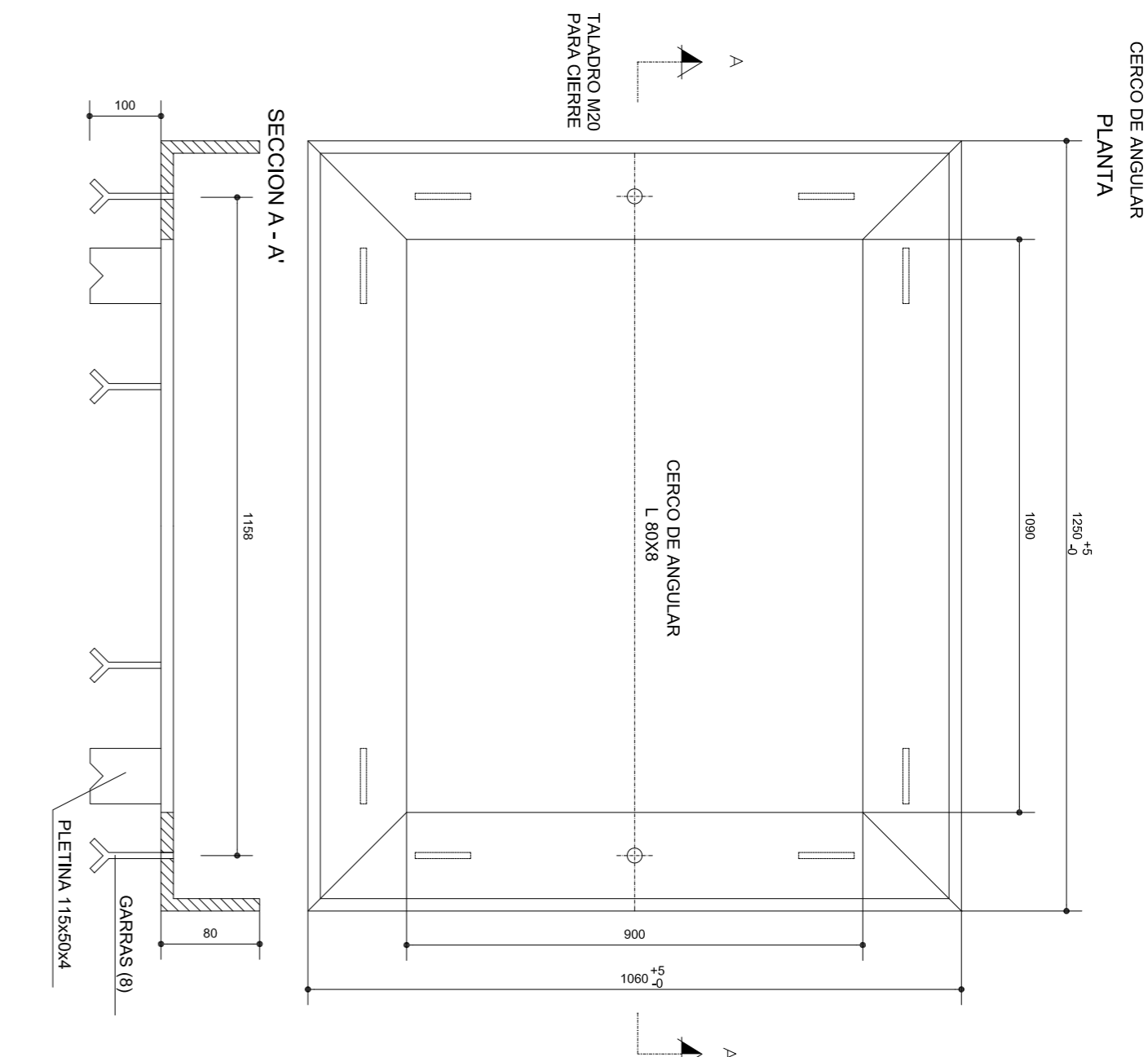
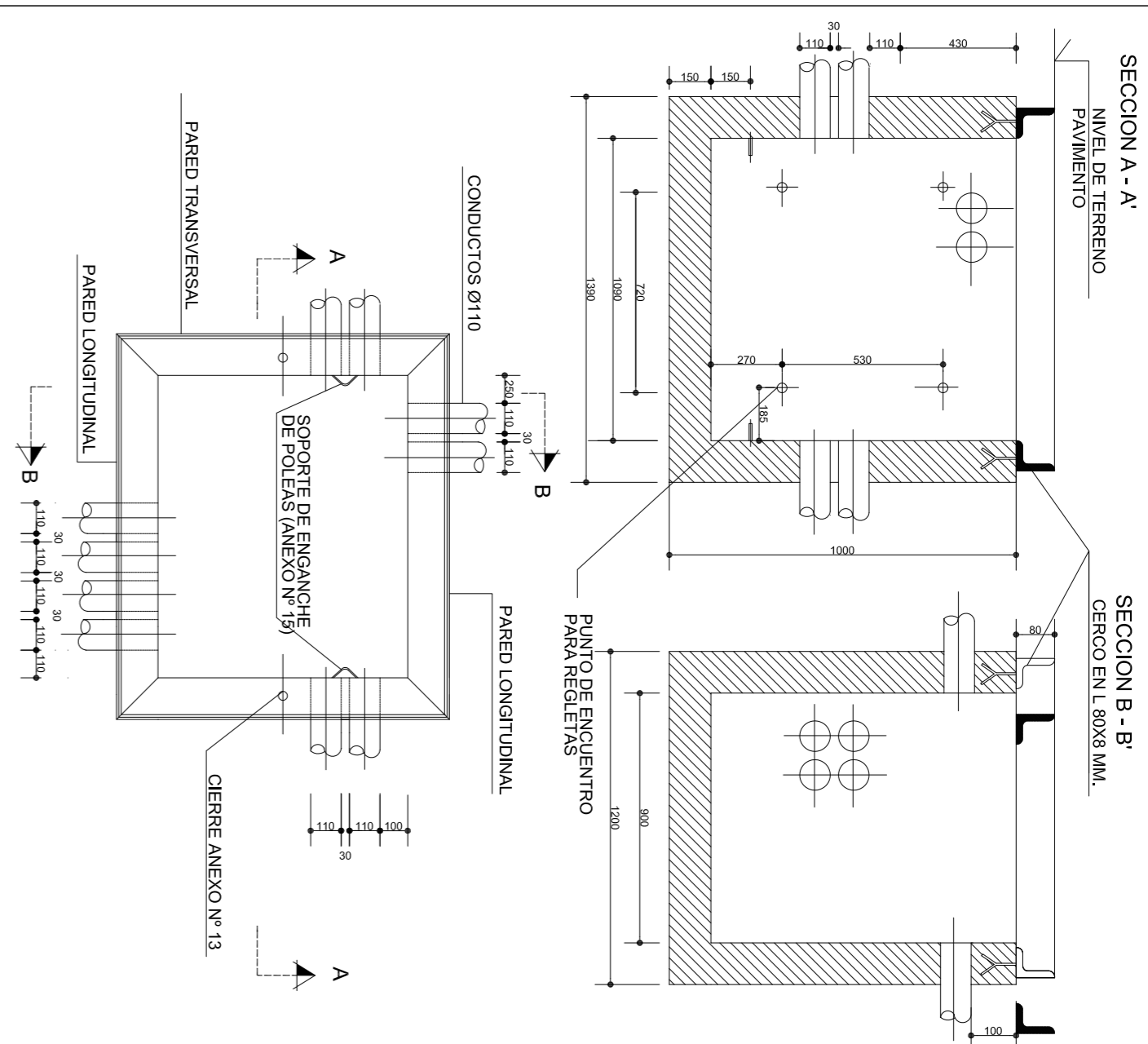
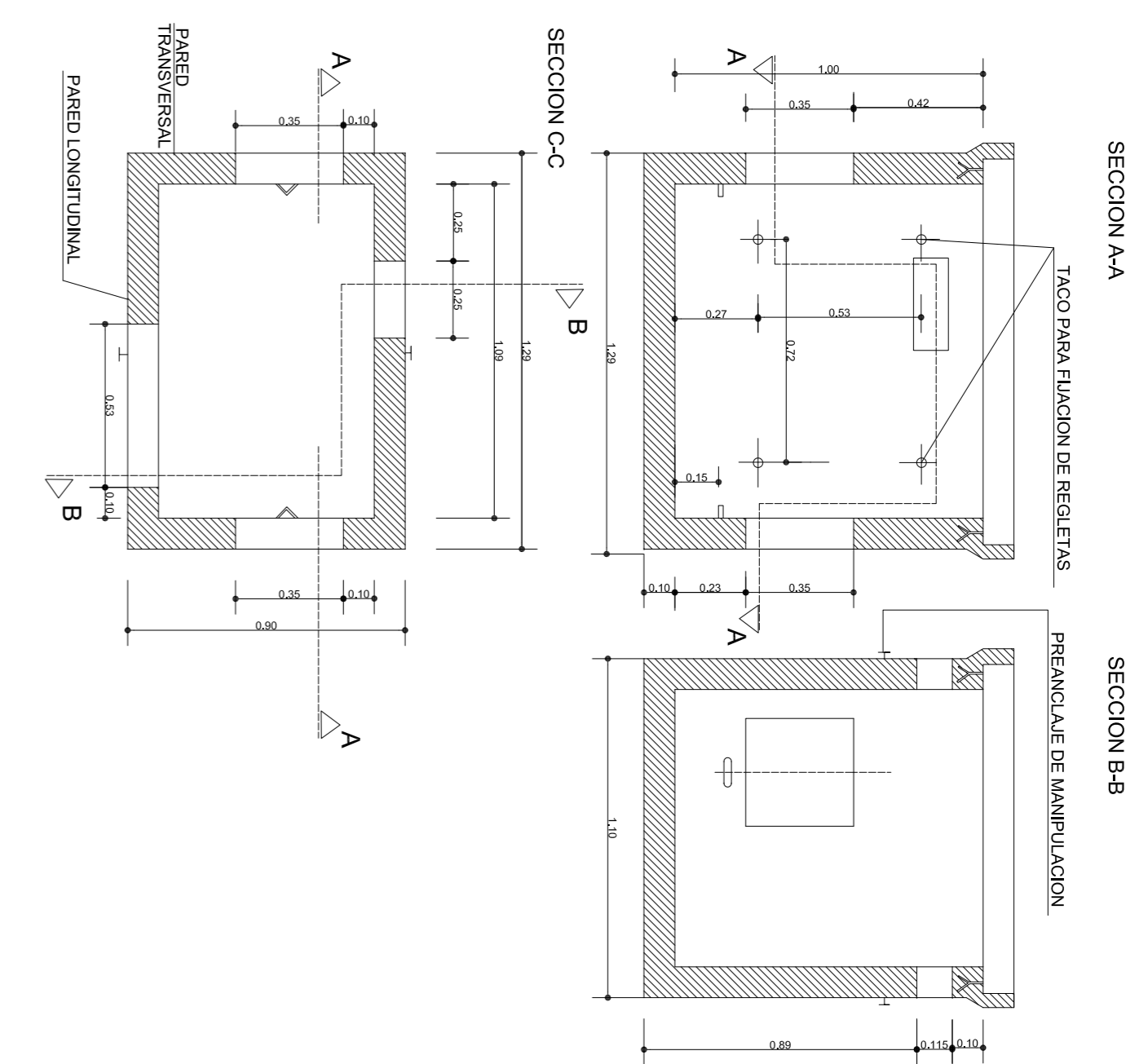
PREFABRICADA

CONSTRUIDA "IN SITU"

ELEMENTOS METALICOS DE CIERRE

ELEMENTOS DE HORMIGON DE CIERRE

VENTANAS DE ENTRADA DE CONDUCTOS



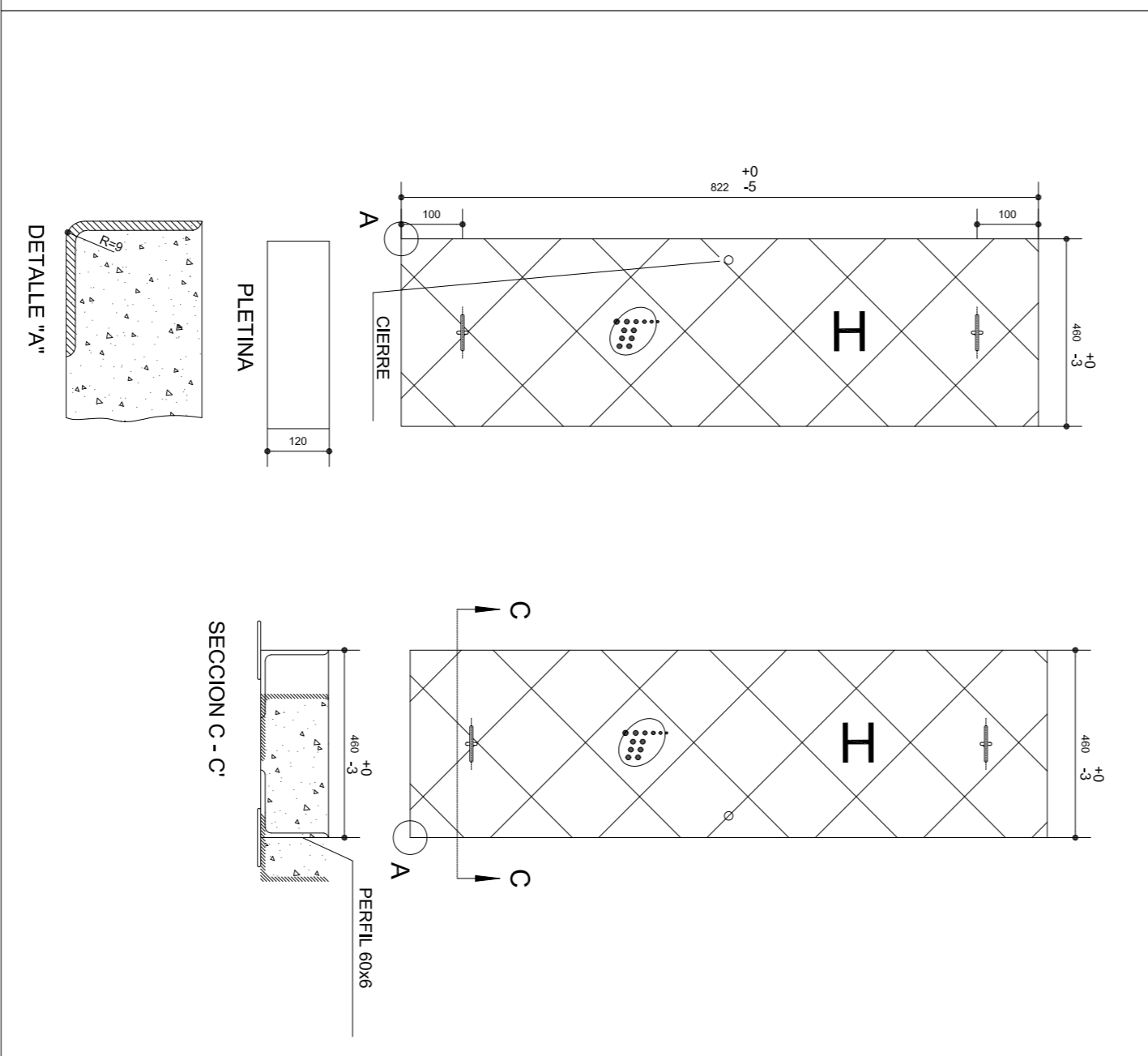
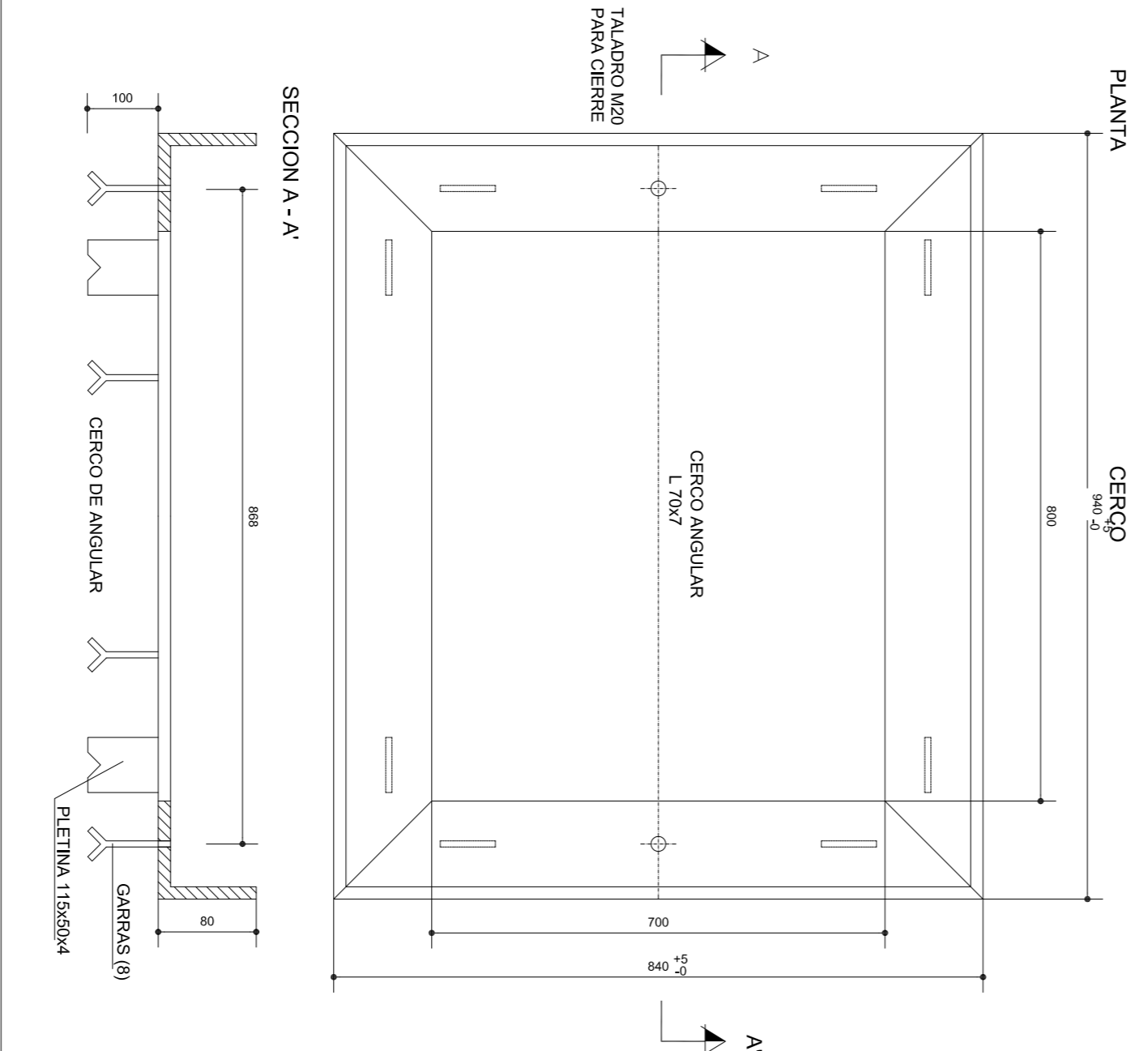
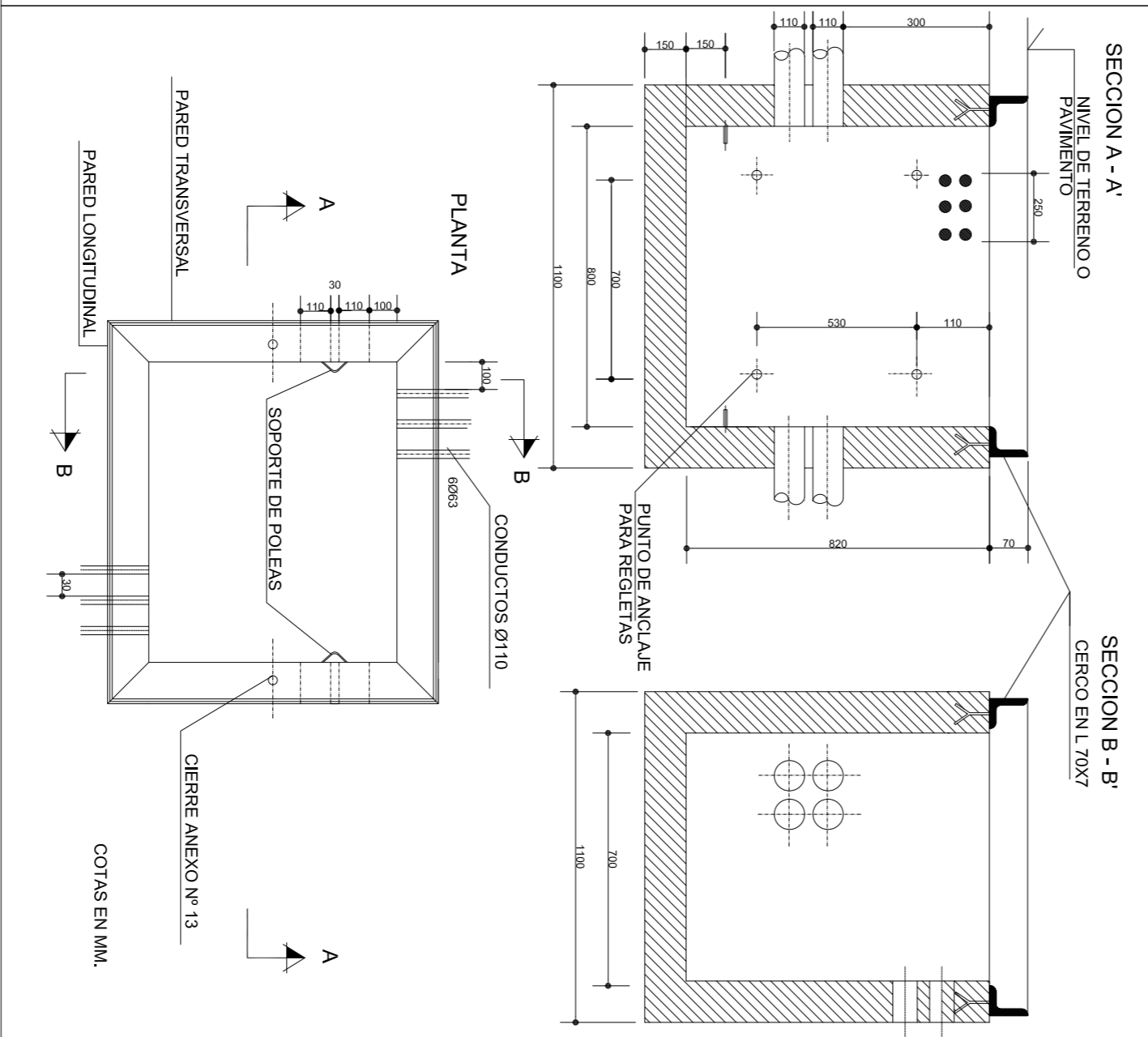
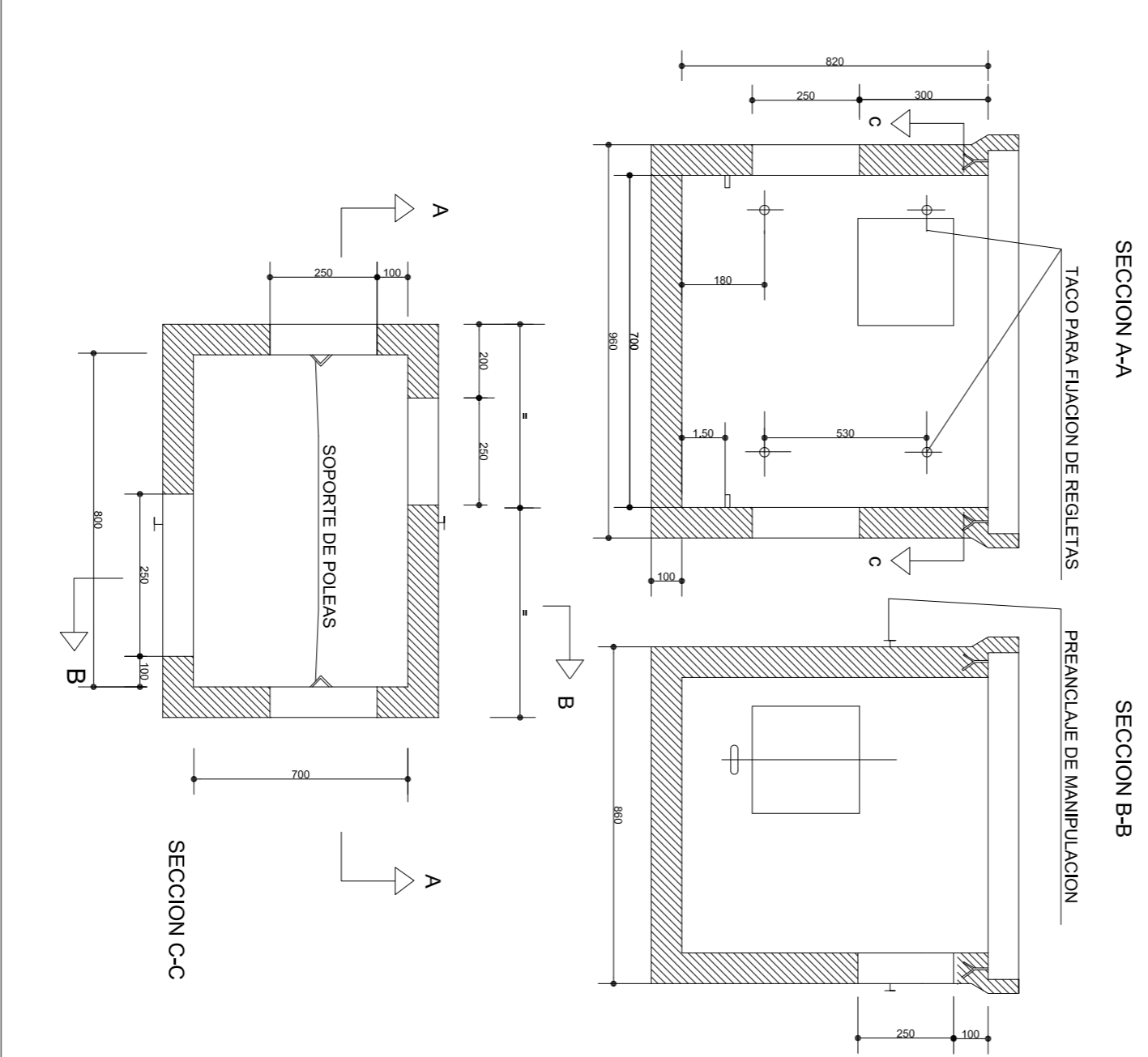
ARQUETAS TIPO H.II

PREFABRICADA

CONSTRUIDA "IN SITU"

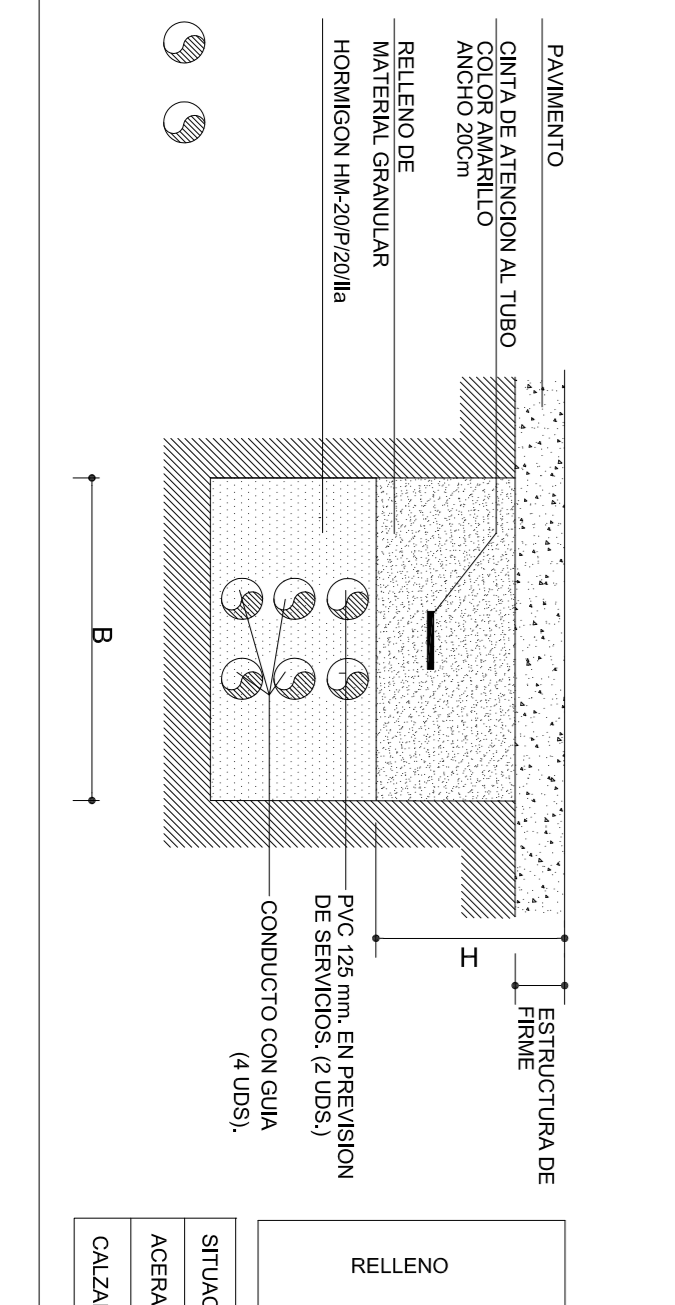
ELEMENTOS METALICOS DE CIERRE

ELEMENTOS DE HORMIGON DE CIERRE



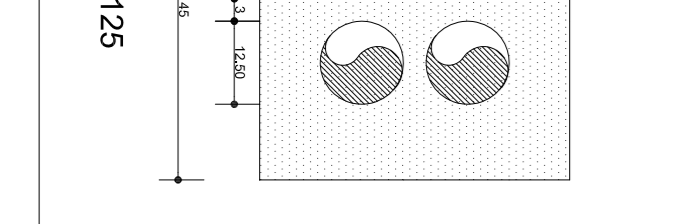
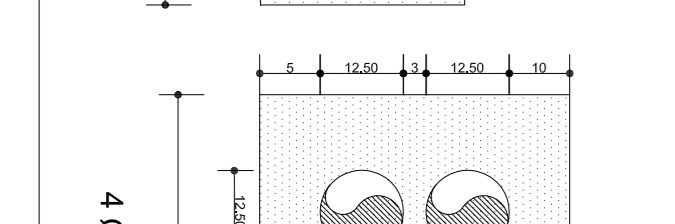
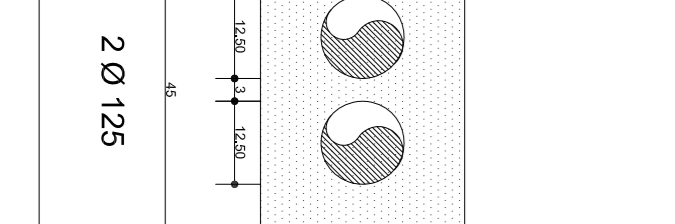
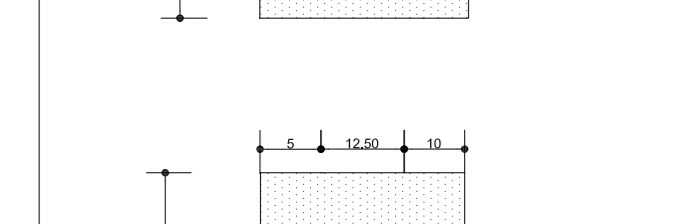
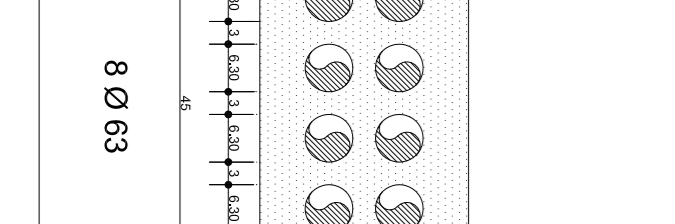
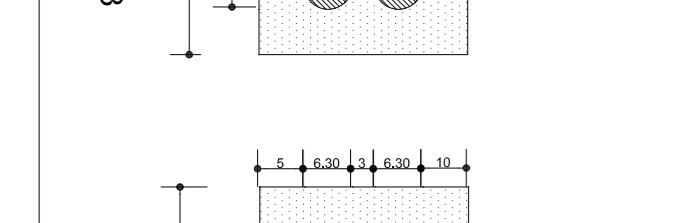
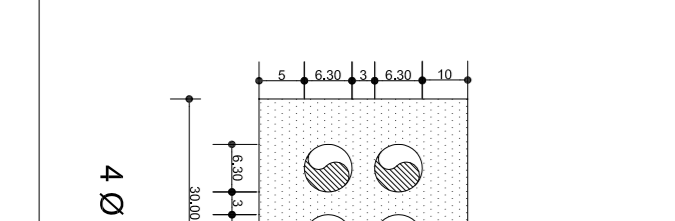
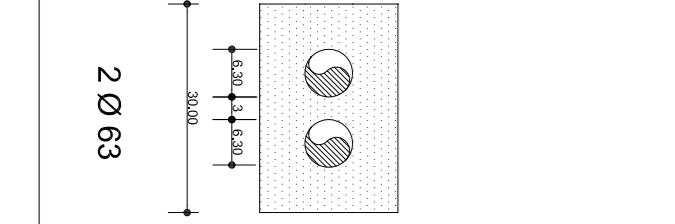
ZANJA PARA ALOJAMIENTO DE LA CONDUCCION

SECCION TRANSVERSAL



| RELLENO | | SITUACION | |
|-------------------------------|------------------------------------|------------------------|--------------------------|
| TIPO DE MATERIAL | ZANJA ARTIFICIAL ADAPTADA (Z40/23) | URBANIZACION EXISTENTE | ZANJA ARTIFICIAL (Z4/23) |
| CLASE | ZANJA | URBANIZACION EXISTENTE | ZANJA |
| ESPESOR TONCADA cm | 20 | URBANIZACION EXISTENTE | ZANJA |
| NIVEL MIN. DE COTAS EN FUSION | 95% P.M. | URBANIZACION EXISTENTE | ZANJA |

| SITUACION | ALTURA (H) | ANCHURA (B) |
|-----------|------------|-------------|
| ACERA | 50 | 30 |
| CAJADA | 70 | 45 |
| | | 70 |



| CONDUCTO | | COTAS EN CM | |
|----------|---|-------------|--------|
| MATERIAL | PE | DIAMETRO | N |
| TIPO | DOBLE PARED: INTERNA ENTORNO CONDUCCION | CLASE | N |
| DIAMETRO | 63/75 | EN 50086-1 | 119993 |
| CLASE | N | EN 50086-2 | 41994 |

PROYECTO DE URBANIZACION DE LA UA2 DEL ZM-SA1

SANTO ANGEL (MURCIA)

RED DE TELECOMUNICACIONES
DETALLES CONSTRUCTIVOS

01/2019
6T.02

PROMOTOR:
JUNTA DE COMPENSACION DE LA UA2 DEL ZM-SA1

ARQUITECTO:
JOAQUIN FERNANDEZ CASTRO